

# Collected tumor specimens



Pilocytic  
Astrocytoma  
samples  
(PA)



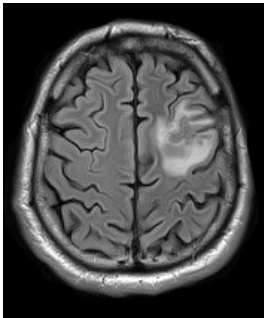
WHO II/III  
samples  
(DA)



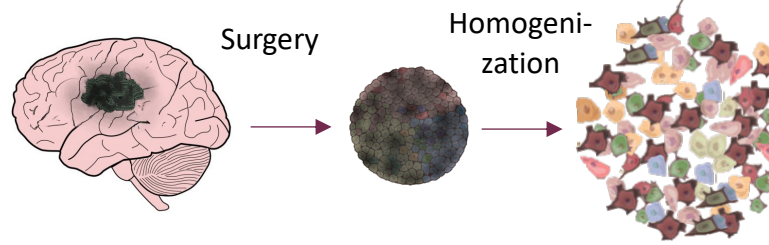
Glioblastoma  
samples  
(GB)

## Clinical data

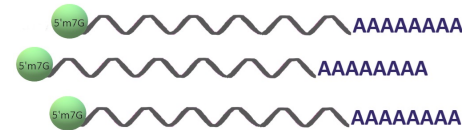
- Age
- Sex
- Pathology
- Tumor location
- Treatment
- Overall survival



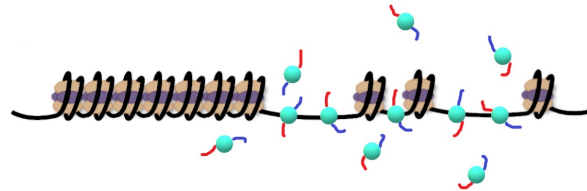
# Experimental workflow



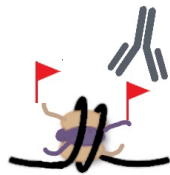
- Gene expression analysis



- Open chromatin profiling

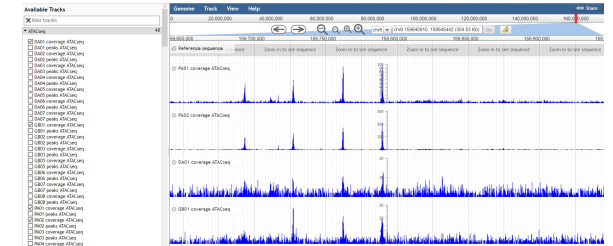


- Histone modification profiling

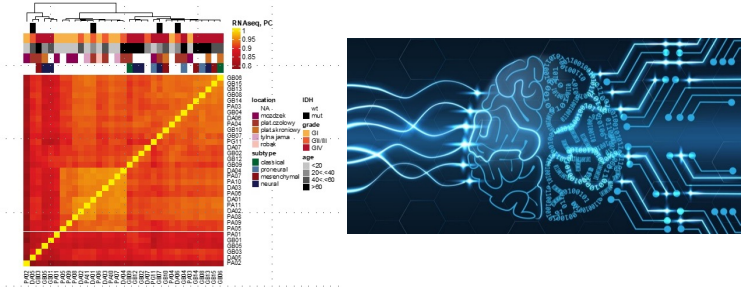


# Data analysis and visualization

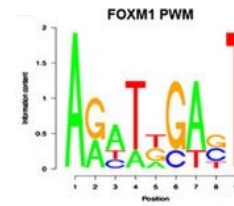
## Genome browser: [<http://regulomics.mimuw>]



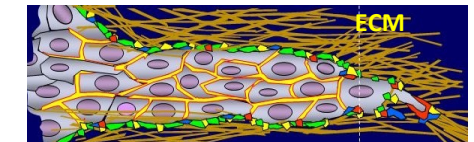
- Integration of transcriptomics and epigenetics



- Regulatory element prediction



- Finding regulatory networks driving glioma pathogenesis



Invasive tumor cells degrade the extracellular matrix (ECM)